



Area Ambiente
Servizio Verde Pubblico
Servizio Progettazione e Gestione Grandi Parchi Urbani



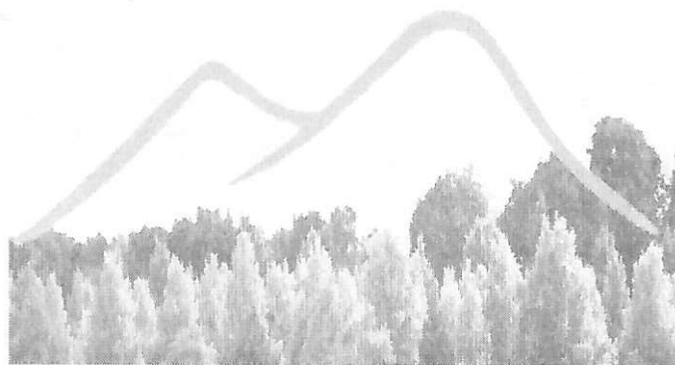
Trasferimenti ai Comuni della Città metropolitana di Napoli
per interventi di ripiantumazione e incremento del verde

Affidamento in cinque lotti degli "interventi di sostituzione e impianto ex novo di alberature sul territorio del Comune di Napoli" attraverso la conclusione di un Accordo quadro per ogni singolo lotto.

Lotto 2

Primo gruppo di interventi di sostituzione e impianto ex novo di alberature presso i quartieri Miano – Piscinola – Scampia – San Carlo all' Arena

PROGETTO ESECUTIVO



8. ELABORATI GRAFICI

II RUP

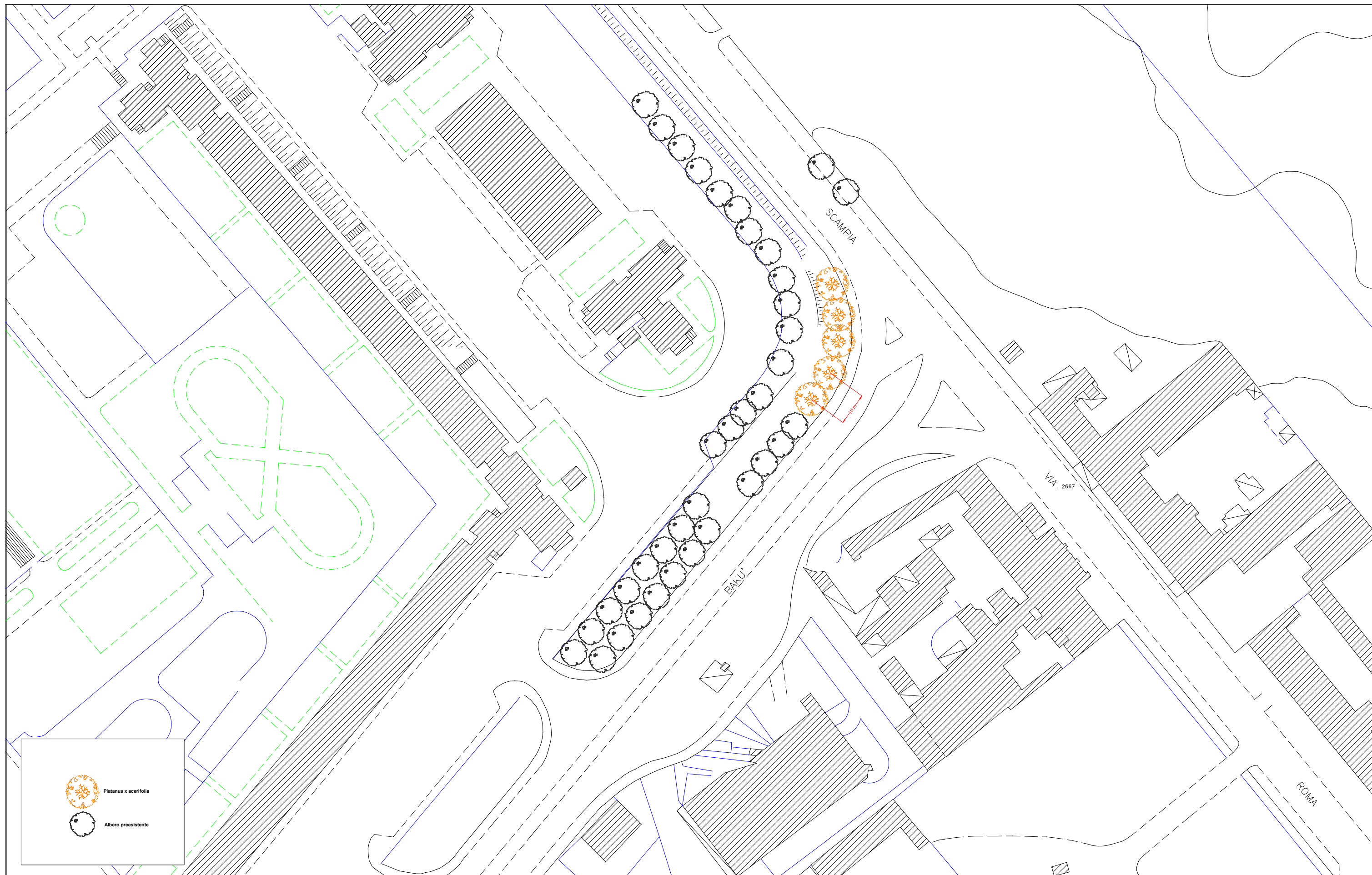
dott.ssa Teresa Bastia


I progettisti

dott. Giovanni Zarra


dott. Andrea Coppeta

Maggio 2024

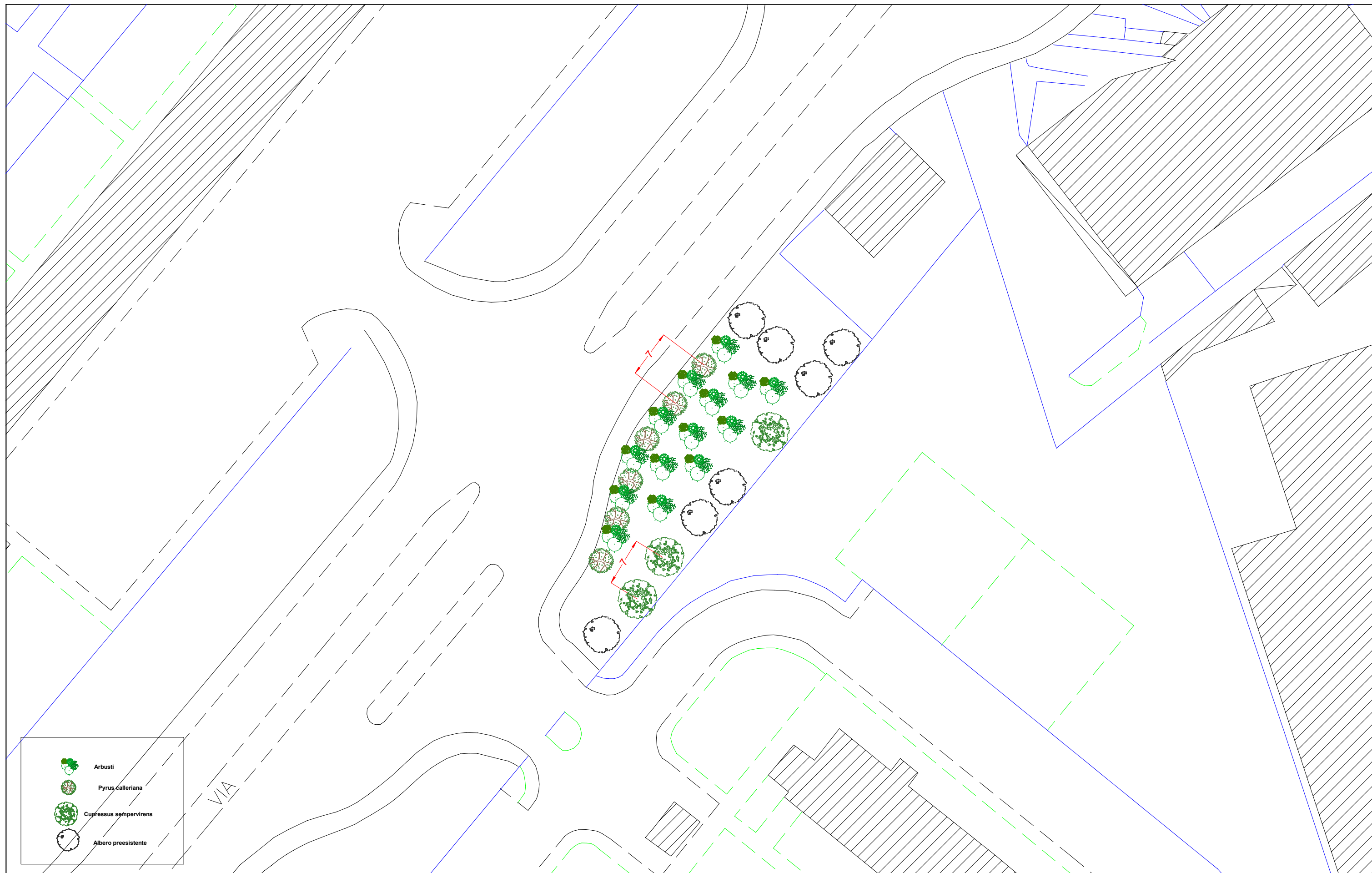


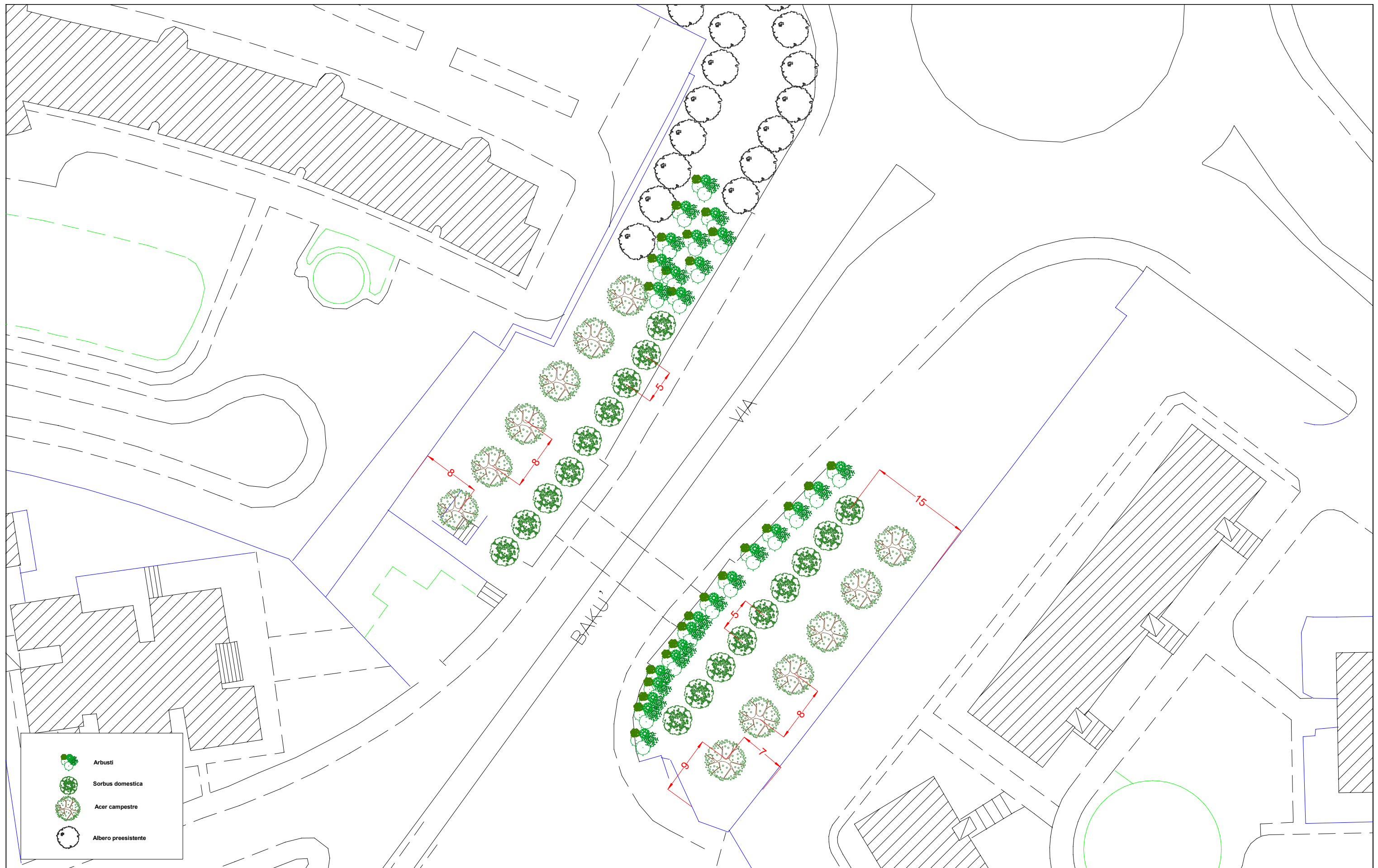


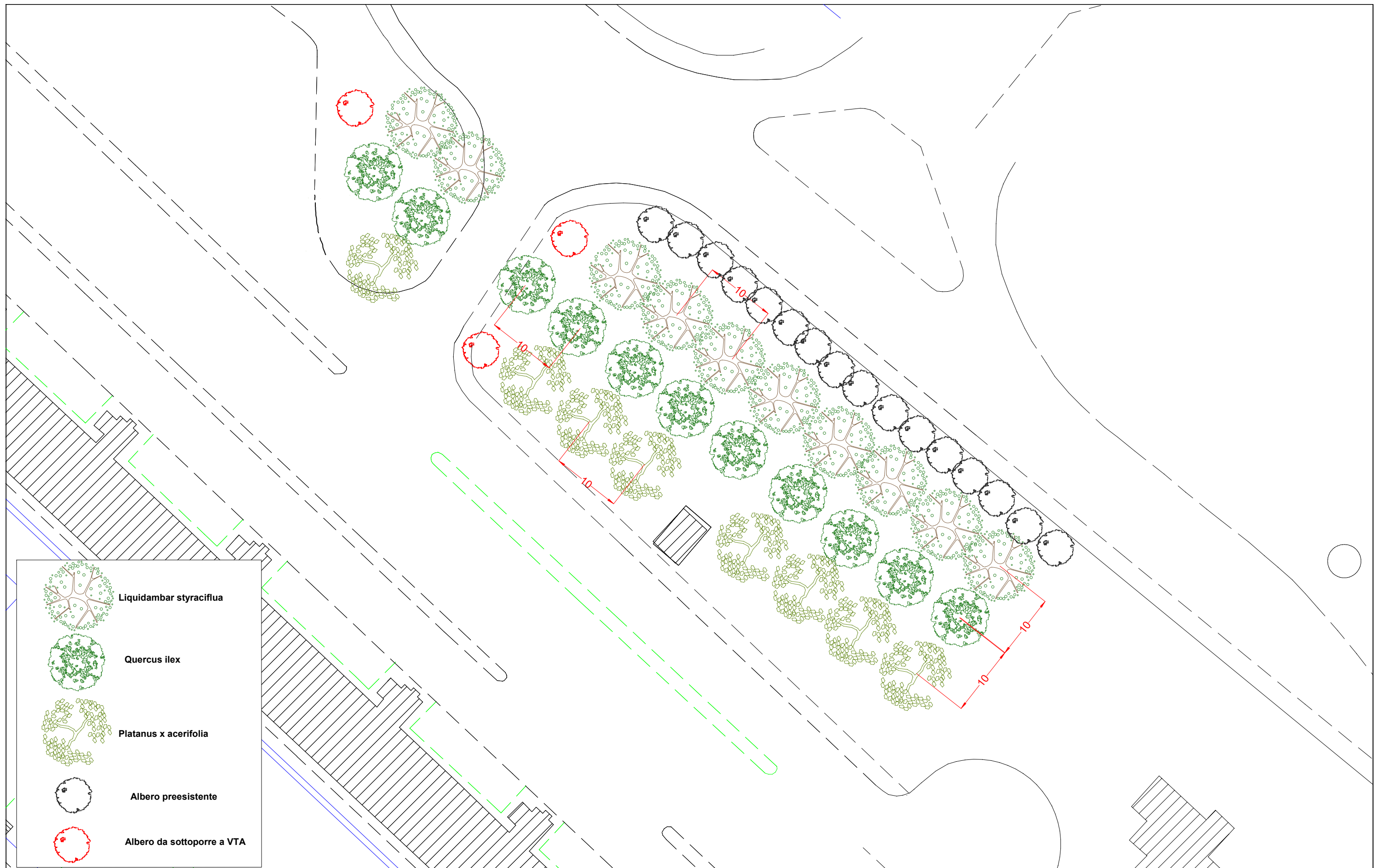
Platanus x acerifolia

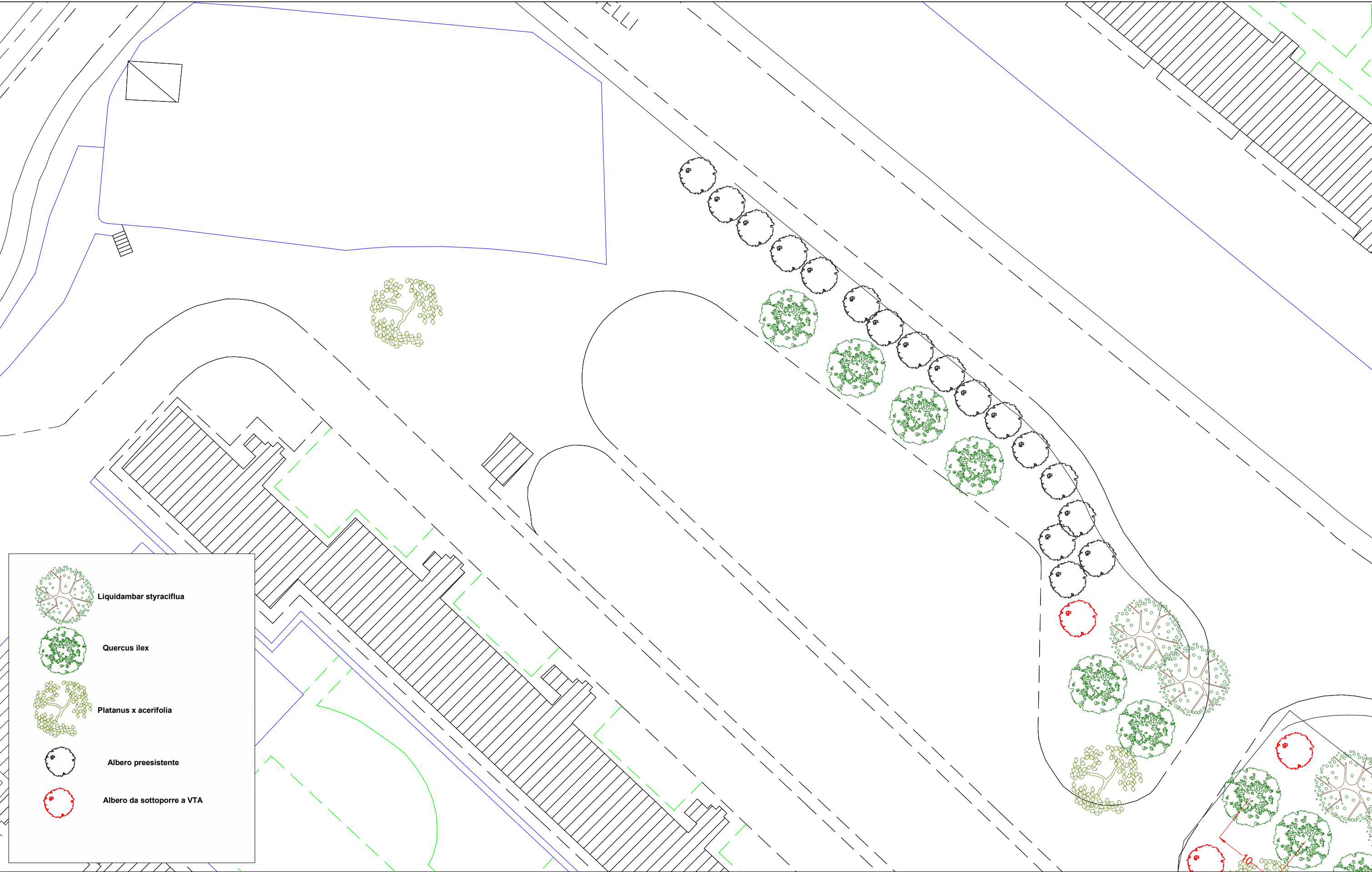


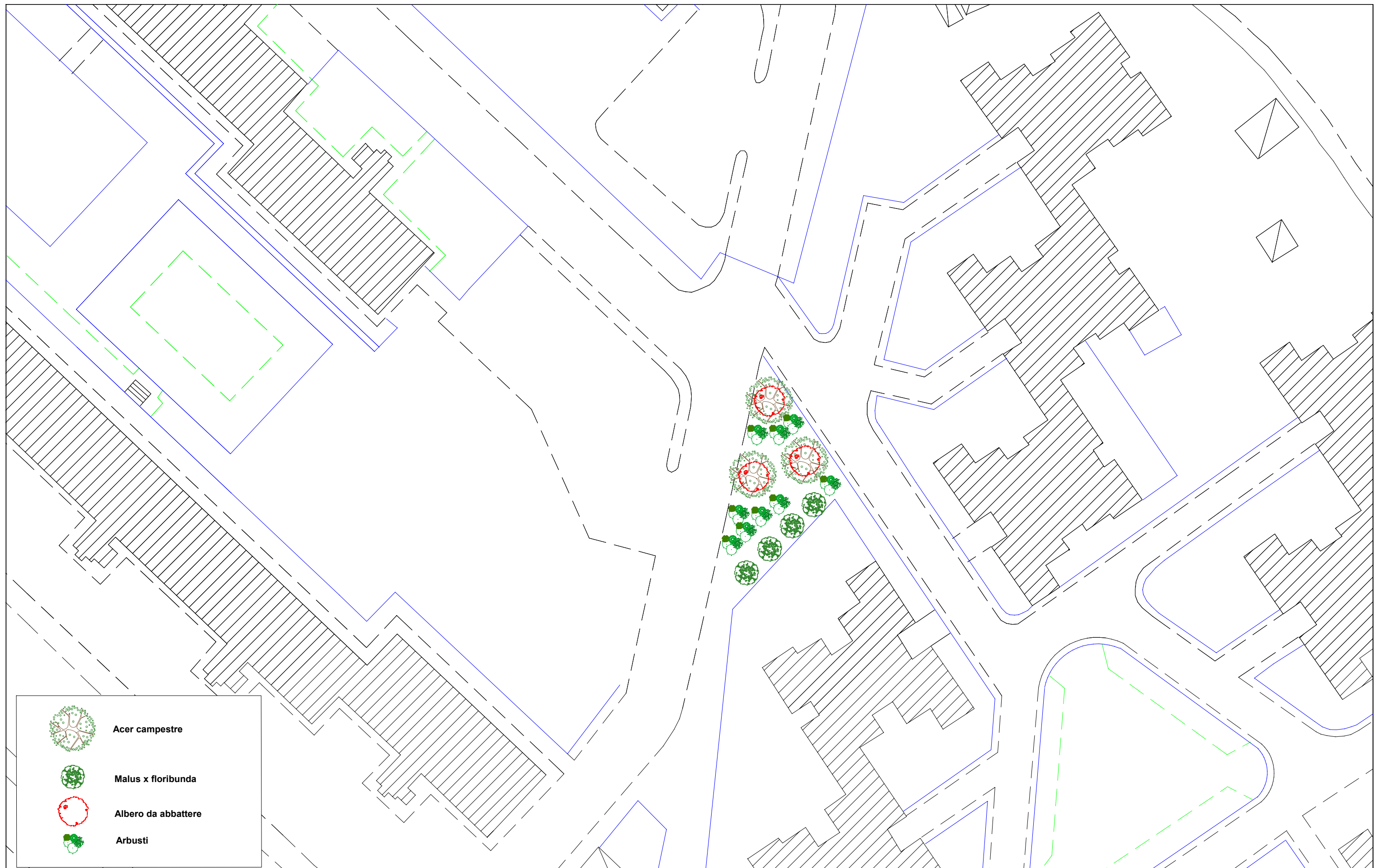
Albero preesistente







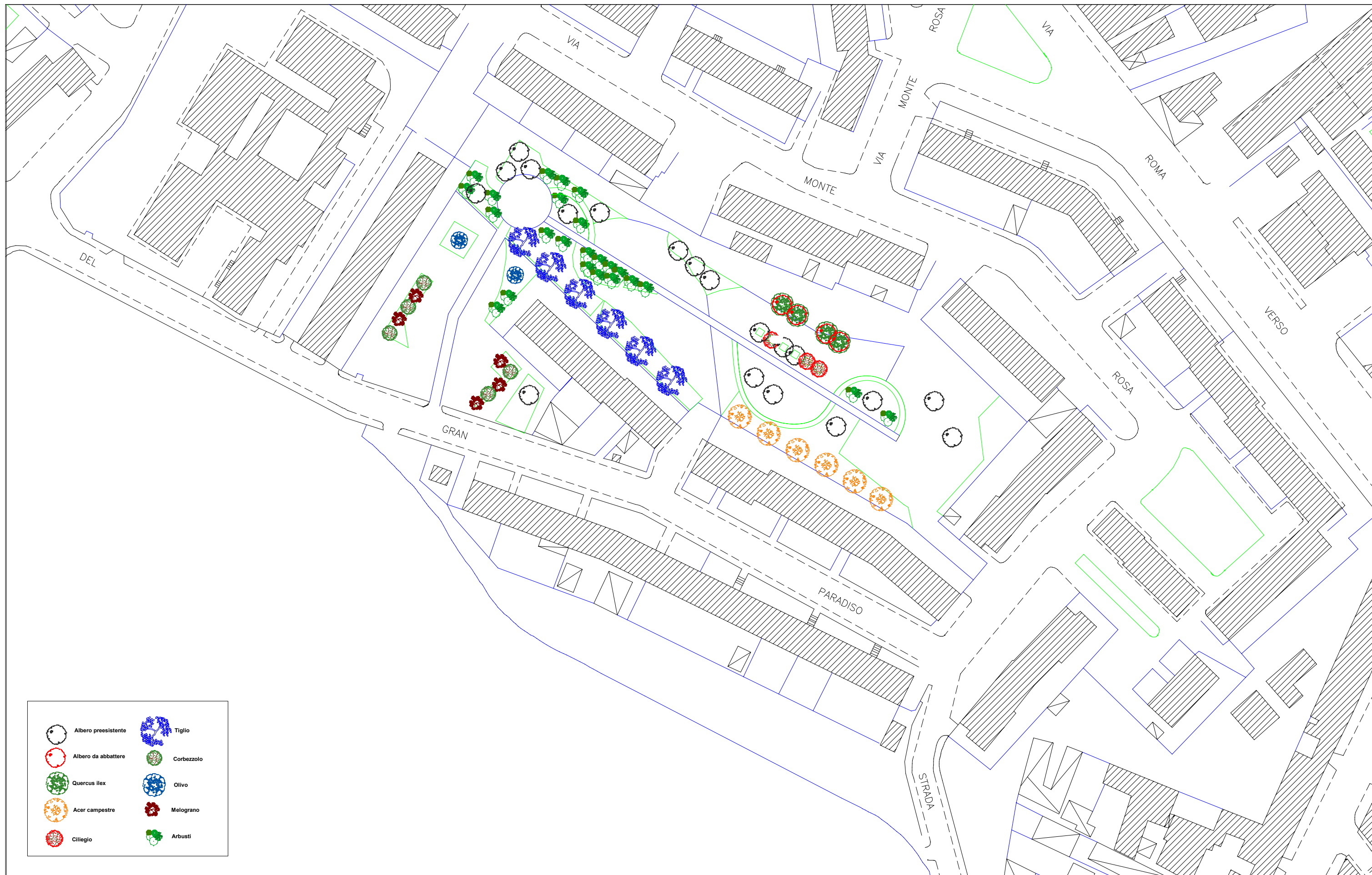


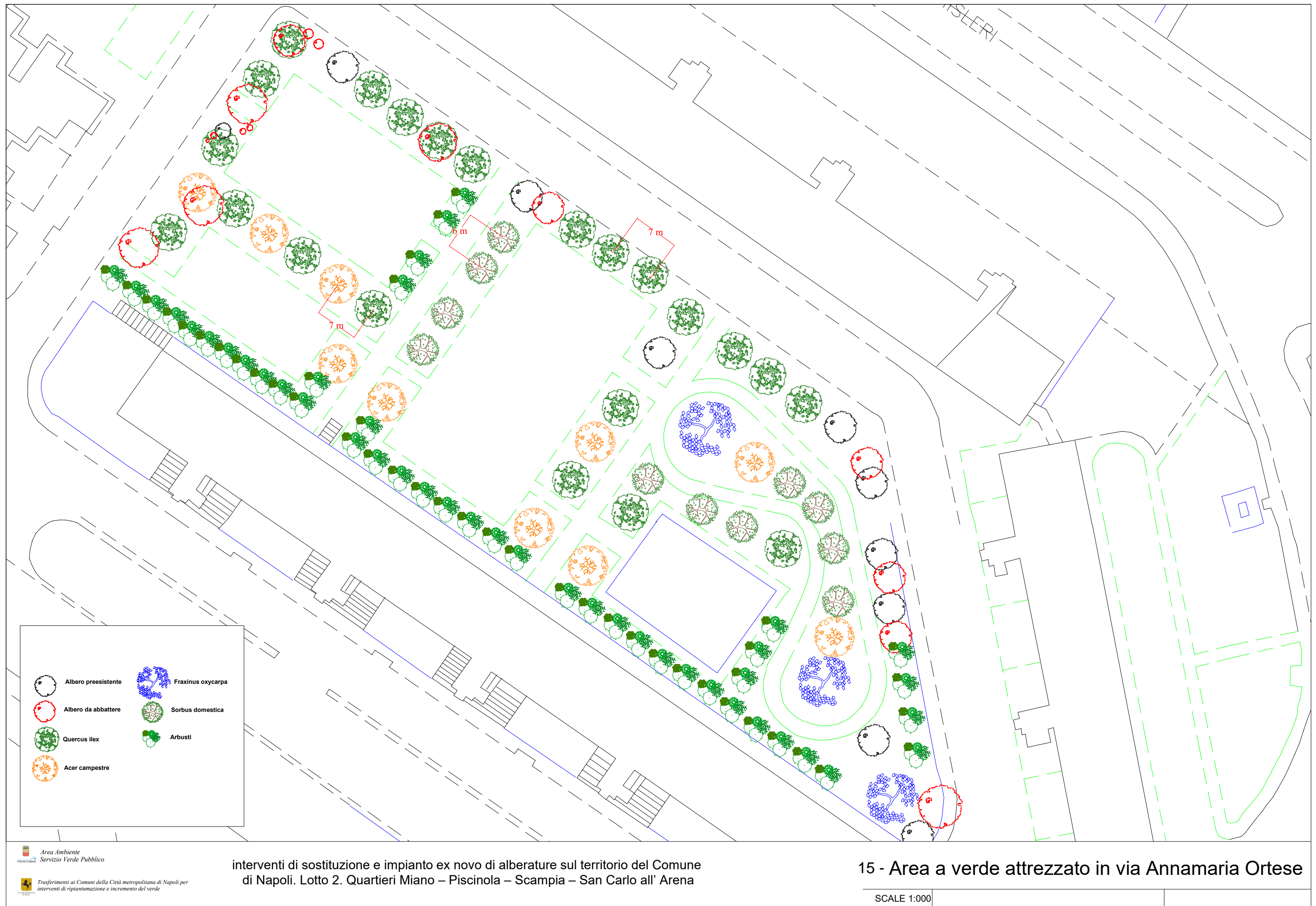


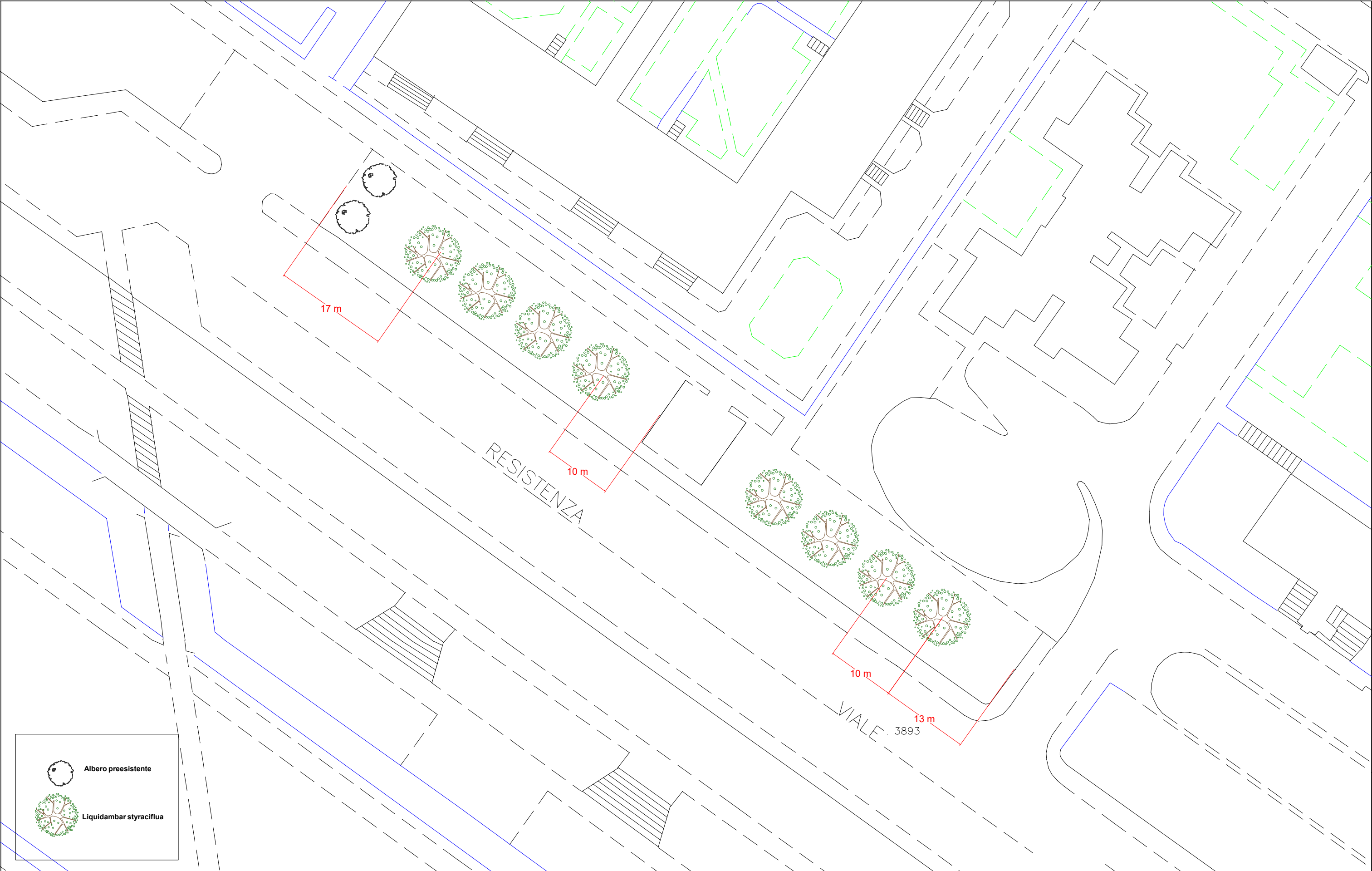
interventi di sostituzione e impianto ex novo di alberature sul territorio del Comune di Napoli. Lotto 2. Quartieri Miano – Piscinola – Scampia – San Carlo all' Arena


5 - Area inerbita Via Pietro Germi - Via Vittorio Parisi

SCALE 1:500

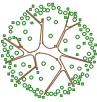




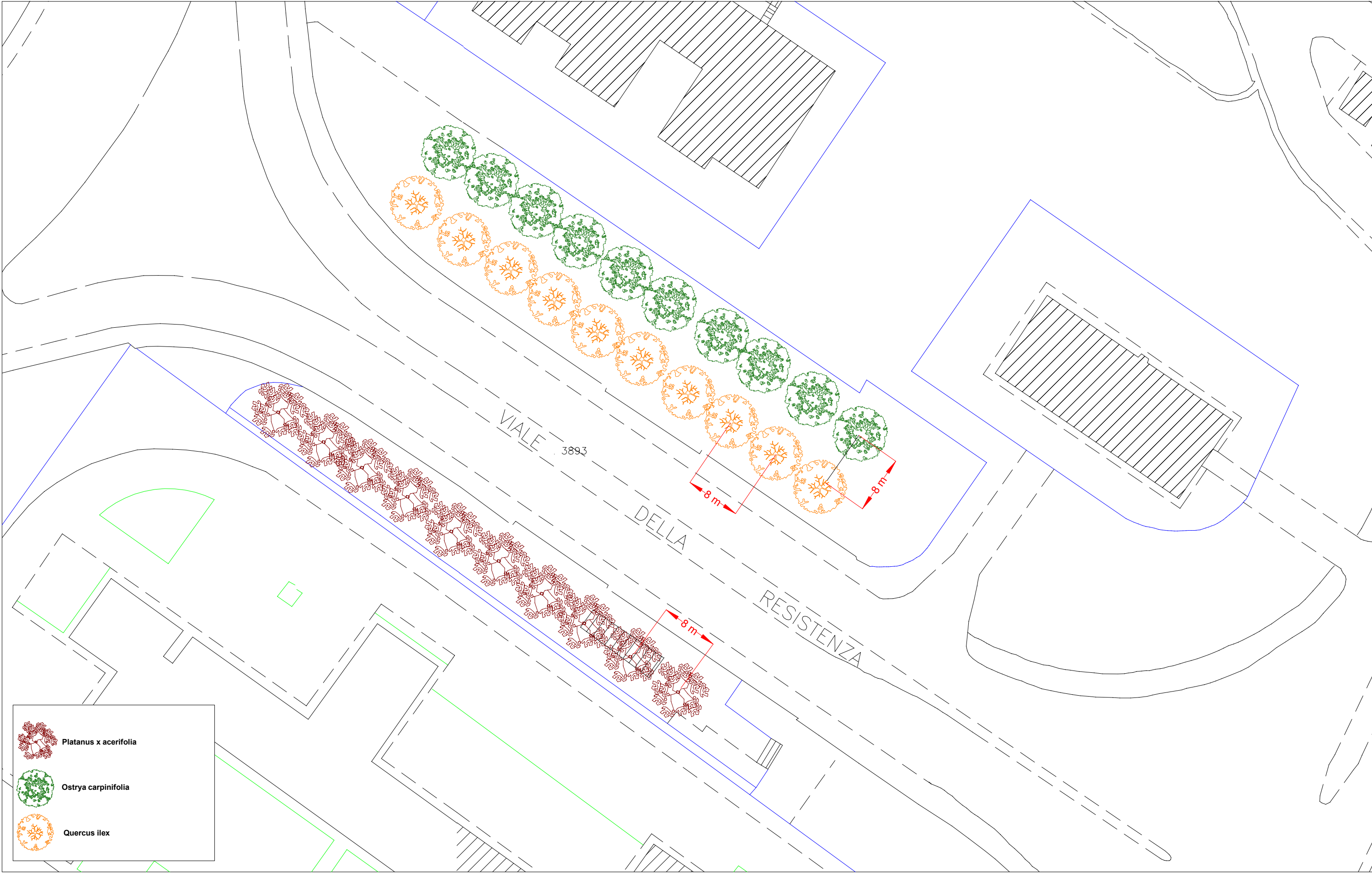






Albero preesistente




Liquidambar styraciflua



**Platanus x acerifolia**

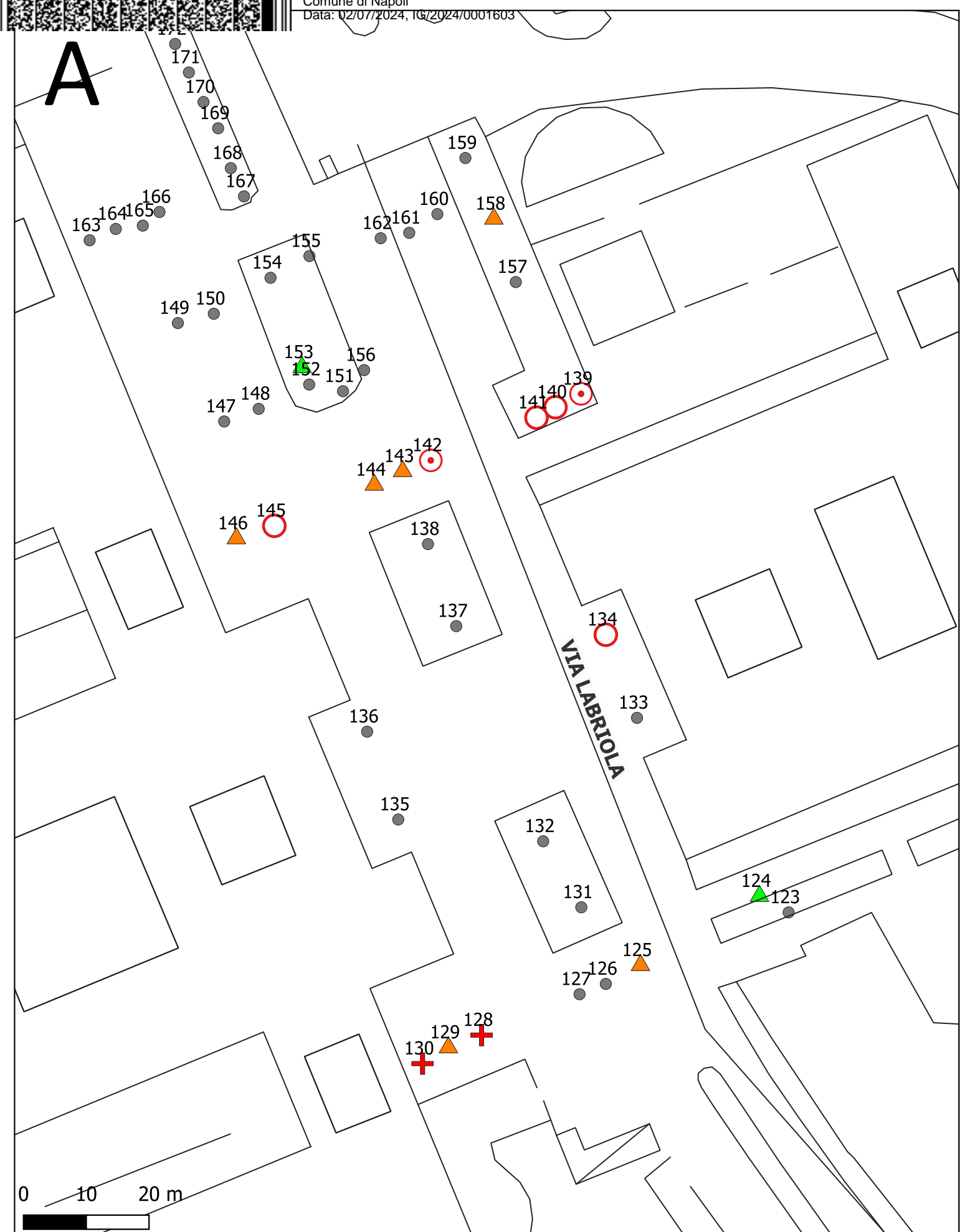
**Ostrya carpinifolia**

**Quercus ilex**

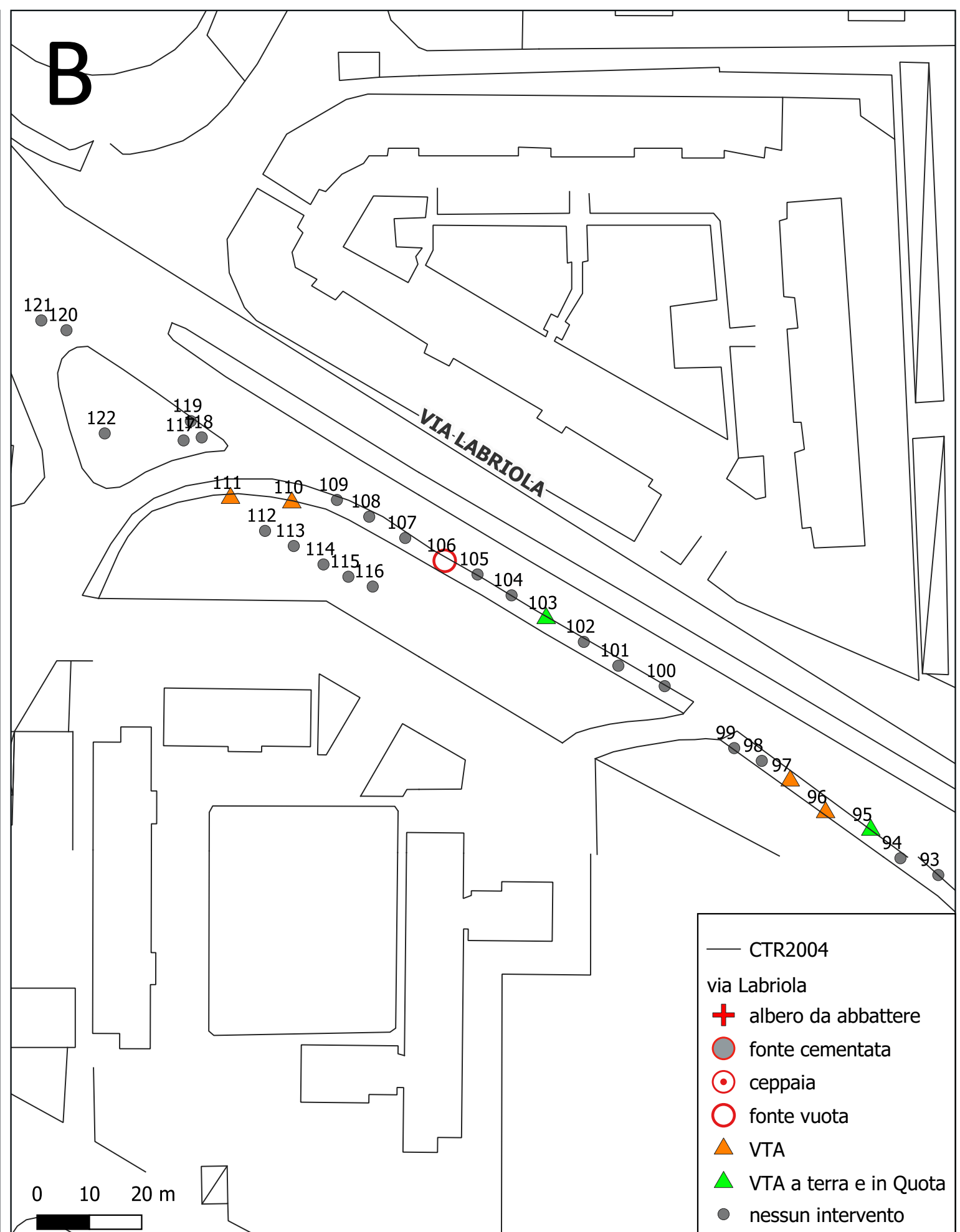




A



B



- CTR2004
- via Labriola
- + albero da abbattere
- fonte cementata
- ⊙ ceppaia
- fonte vuota
- ▲ VTA
- ▲ VTA a terra e in Quota
- nessun intervento



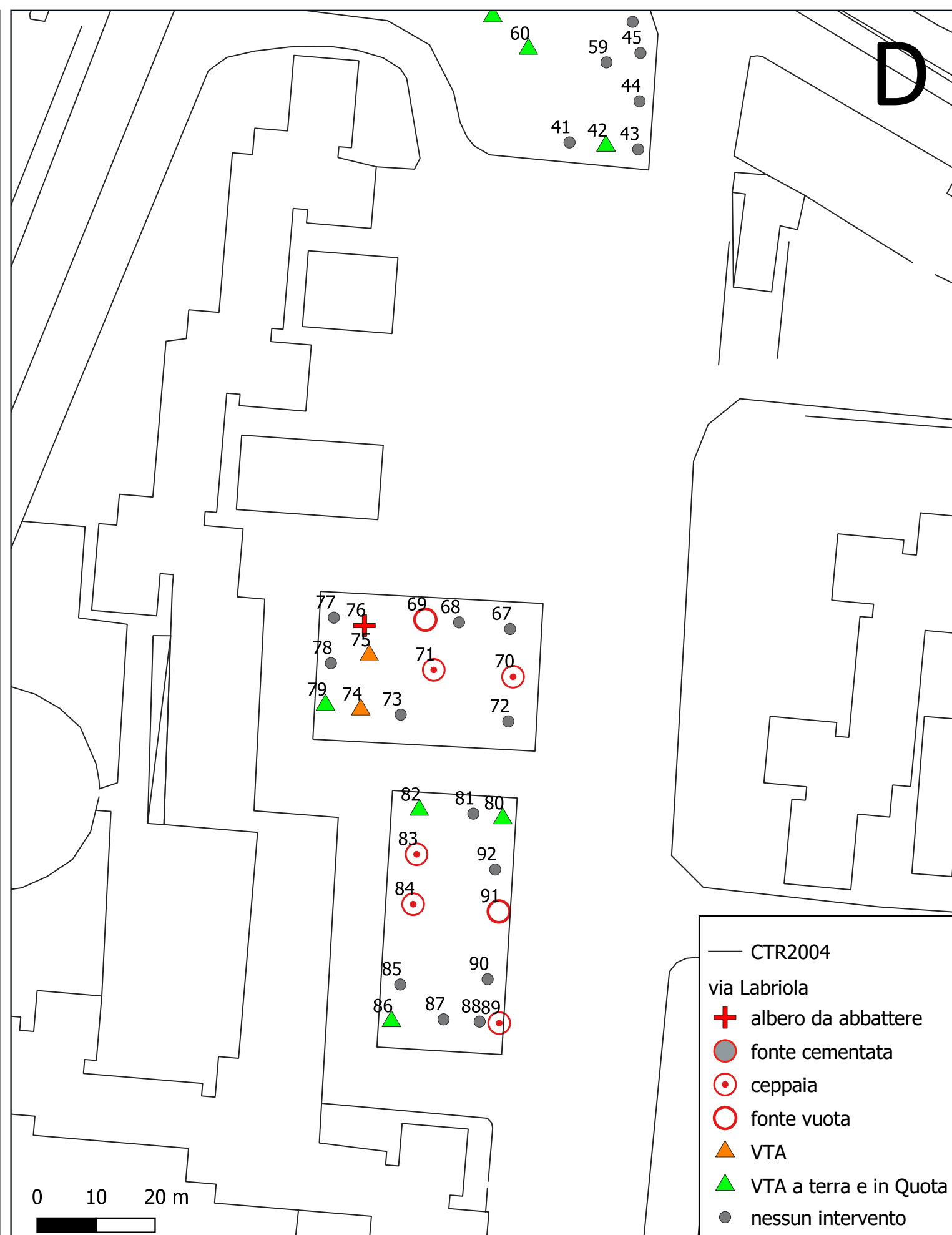
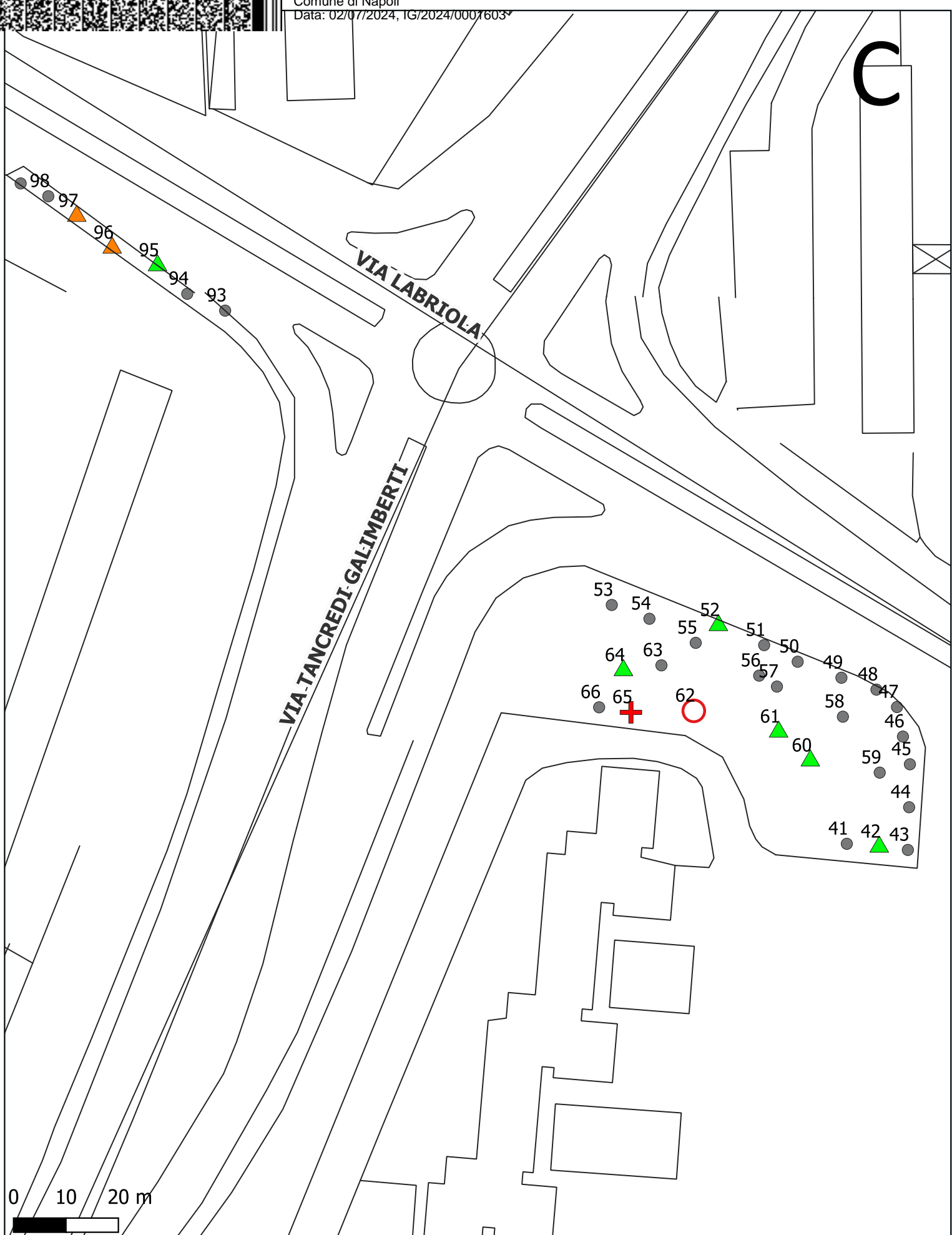
Area Ambiente
Servizio Verde Pubblico



Trasferimenti ai Comuni della Città
metropolitana di Napoli per interventi di
ripiantumazione e incremento del verde

interventi di sostituzione e impianto ex novo di alberature sul territorio del Comune di
Napoli. Lotto 2. Quartieri Miano – Piscinola – Scampia – San Carlo all' Arena

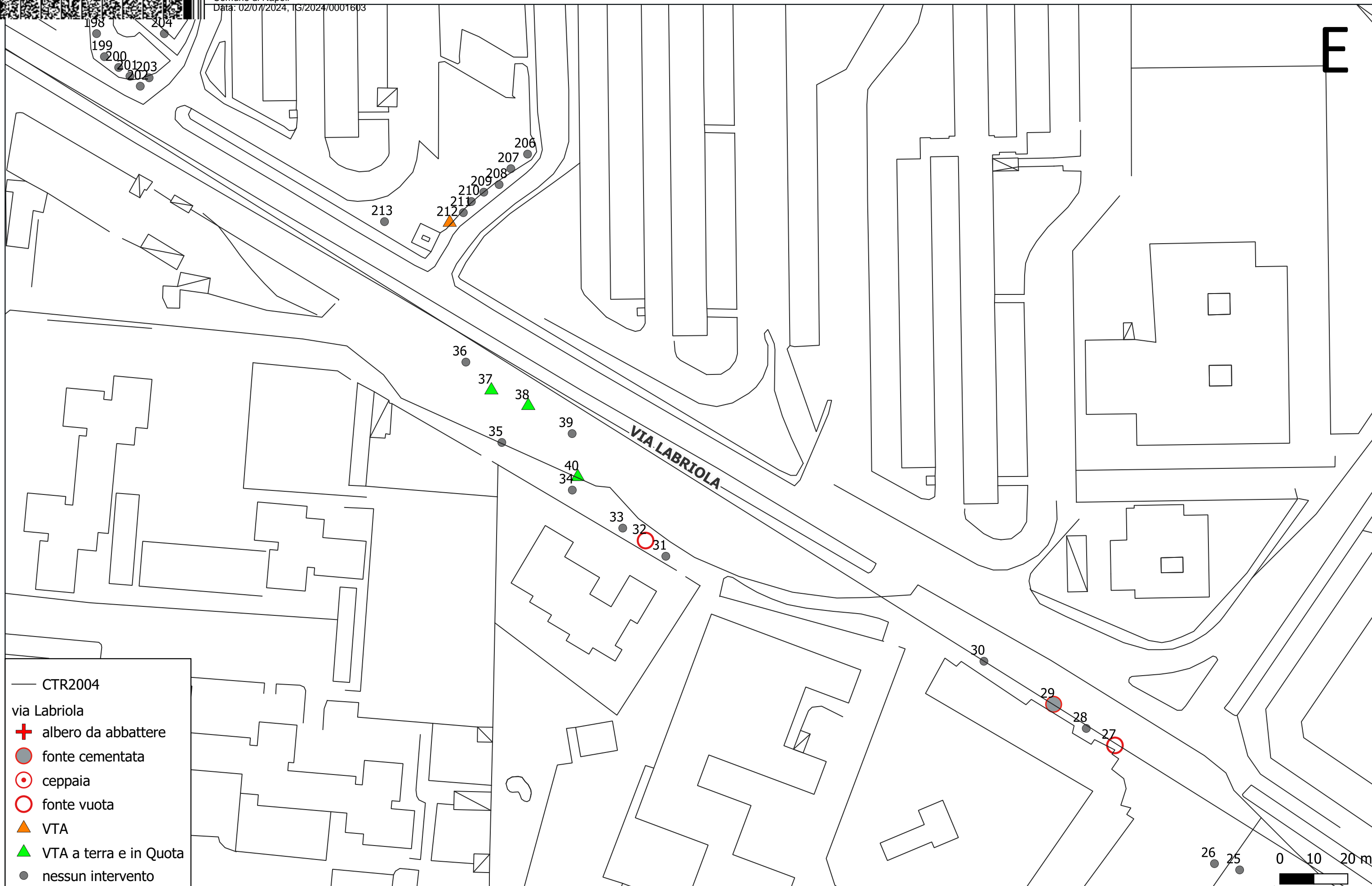
19bis - Via Arturo Labriola



- CTR2004
- via Labriola
- + albero da abbattere
- fonte cementata
- ⊙ ceppaia
- fonte vuota
- ▲ VTA
- ▲ VTA a terra e in Quota
- nessun intervento



E



— CTR2004

via Labriola

+ albero da abbattere

● fonte cementata

○ ceppaia

○ fonte vuota

▲ VTA

▲ VTA a terra e in Quota

● nessun intervento



— CTR2004

via Labriola

+

albero da abbattere

●

fonte cementata

○

ceppaia

○

fonte vuota

▲

VTA

▲

VTA a terra e in Quota

●

nessun intervento

